



Sherlock
2013 National Data Report

Report on >30,000 Sherlock users

Sherlock:

An Online Assessment, Reporting, Communications and Evaluation System for Students in Grades 6-12 and beyond

Identify Factors Related to Motivation, Perseverance, Engagement, Optimism, Goal Orientation, Planfulness

- Aspirations
- Desire for assistance
- Family influences
- Interest in guidance and support activities and services
- Career development interests and experience
- Support
- Challenges

Sherlock:

An Online Assessment, Reporting, Communications and Evaluation System for Students in Grades 6-12 and beyond

Construct these factors as they relate to

- Desired activities, services, and experiences across three counseling domains
- Benchmarks that indicate significant behaviors or achievements

- School engagement concerns
- College readiness concerns
- Career readiness concerns

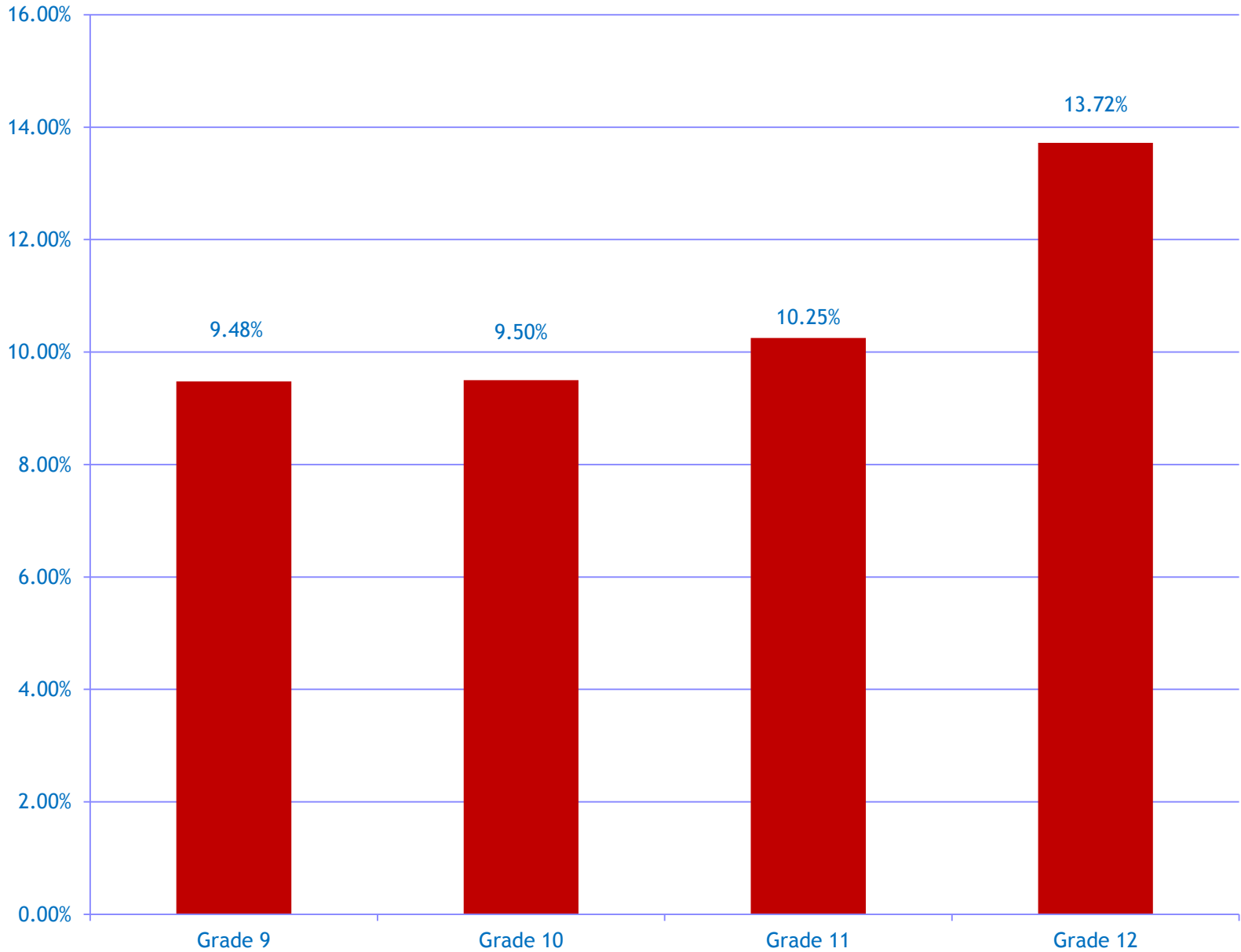
Findings from 30,000 High School Students across the USA

- Students grades 9-12
- Data collected 2009 -2013

National Data Report

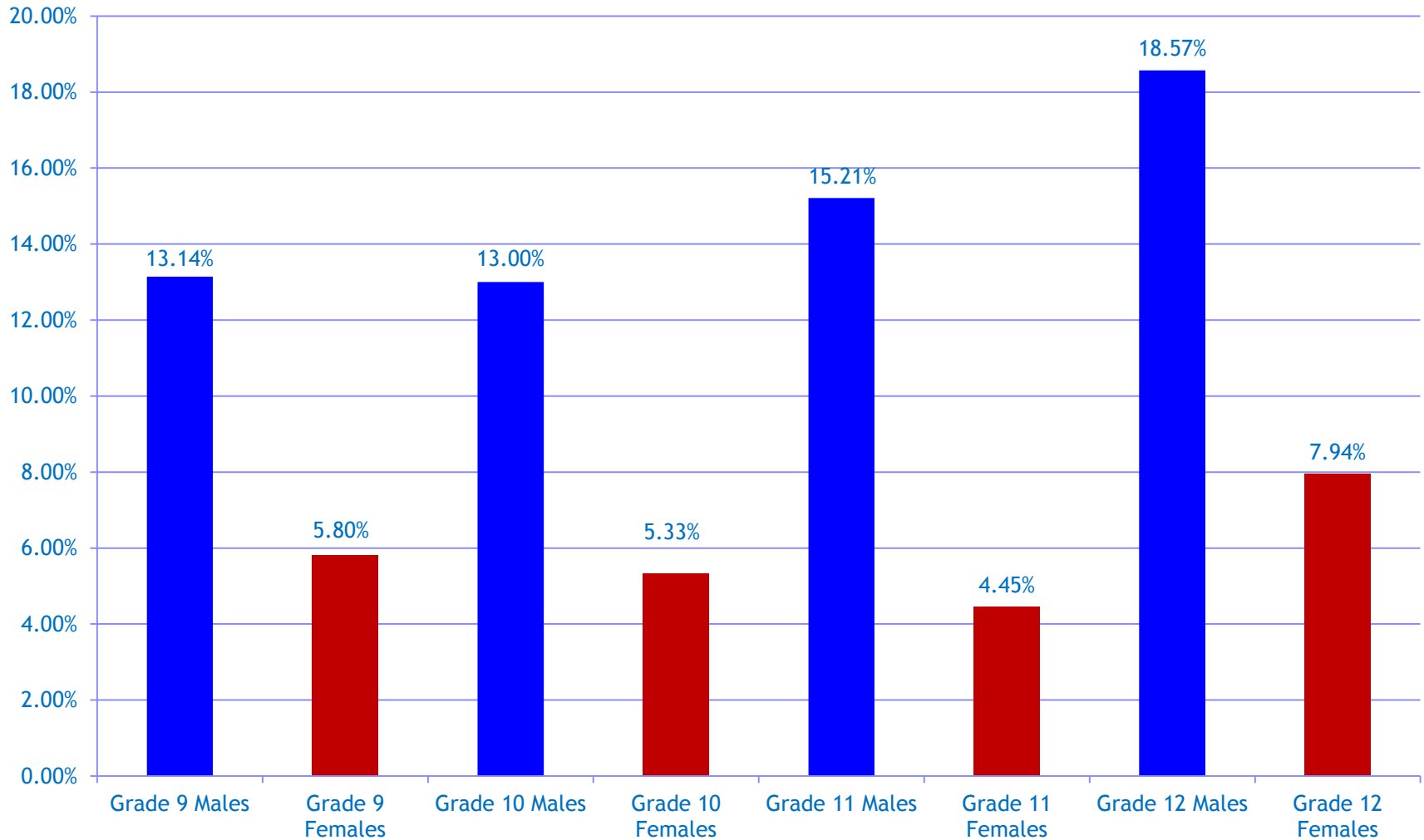
- Data from Sherlock Form 2 (high school)
- Selected data to illustrate key findings
- A sampling of ways that Sherlock data may be reported

Zero Hours of Homework per Week All Students Grades 9 - 12



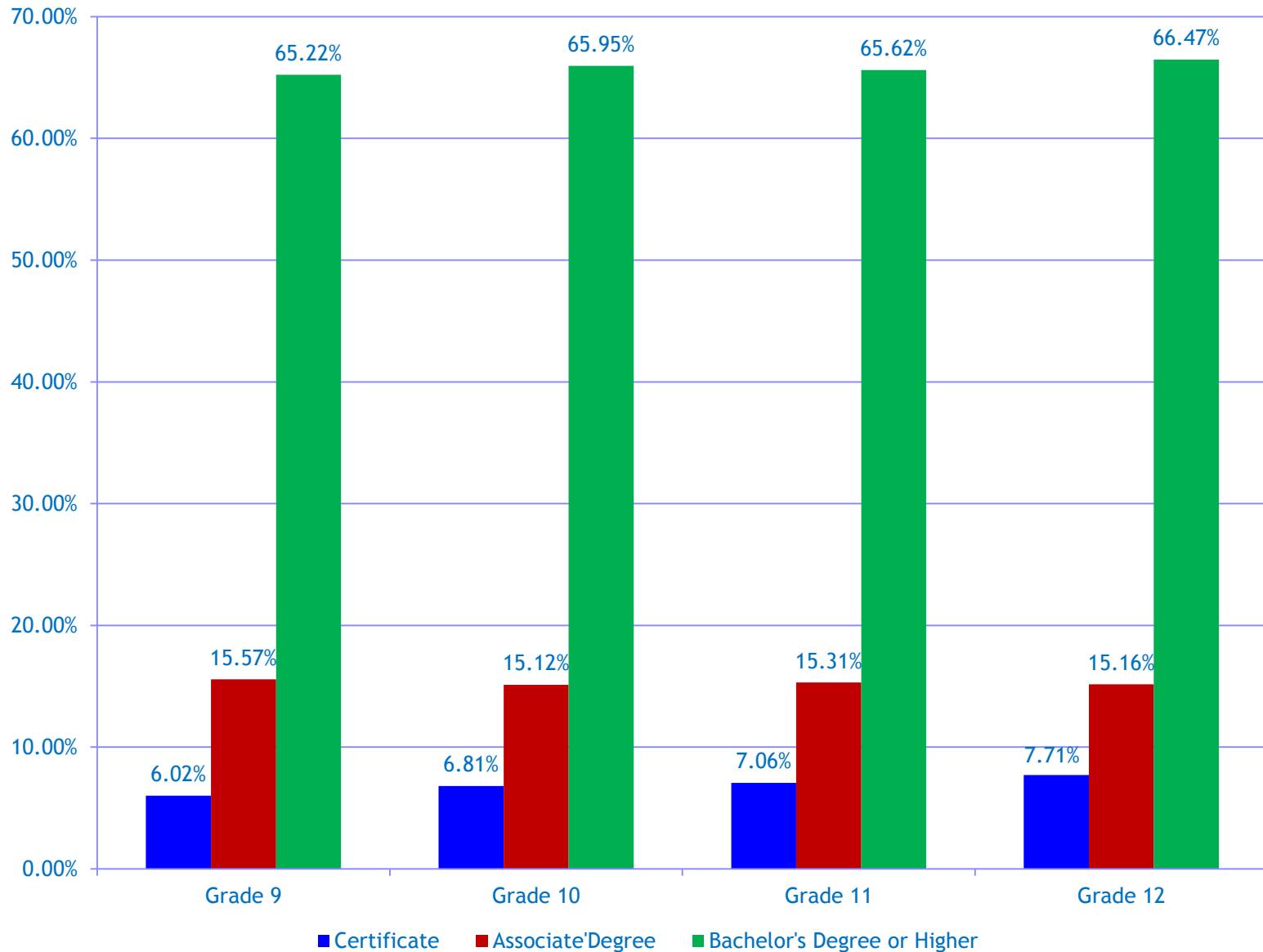
Zero Hours of Homework per Week Males and Females Grades 9-12

At every grade level, males are more than twice as likely as females to report doing zero hours of homework per week. Alarmingly, for both sexes, the vector is in the wrong direction. In twelfth grade 41 percent more males and 37 percent more females indicate doing no homework as seniors than as freshmen.

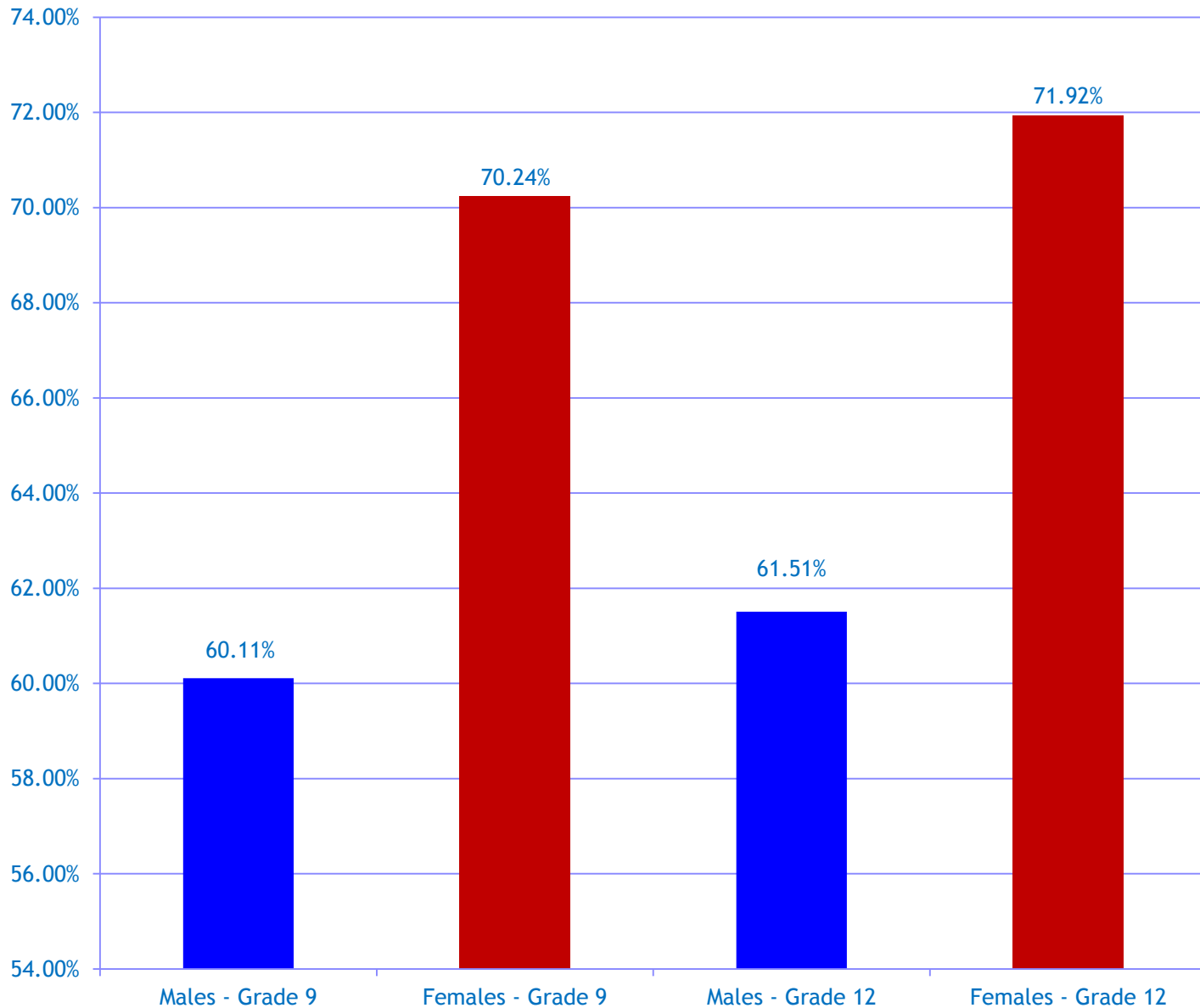


Highest Level of Education Planned Grades 9 -12

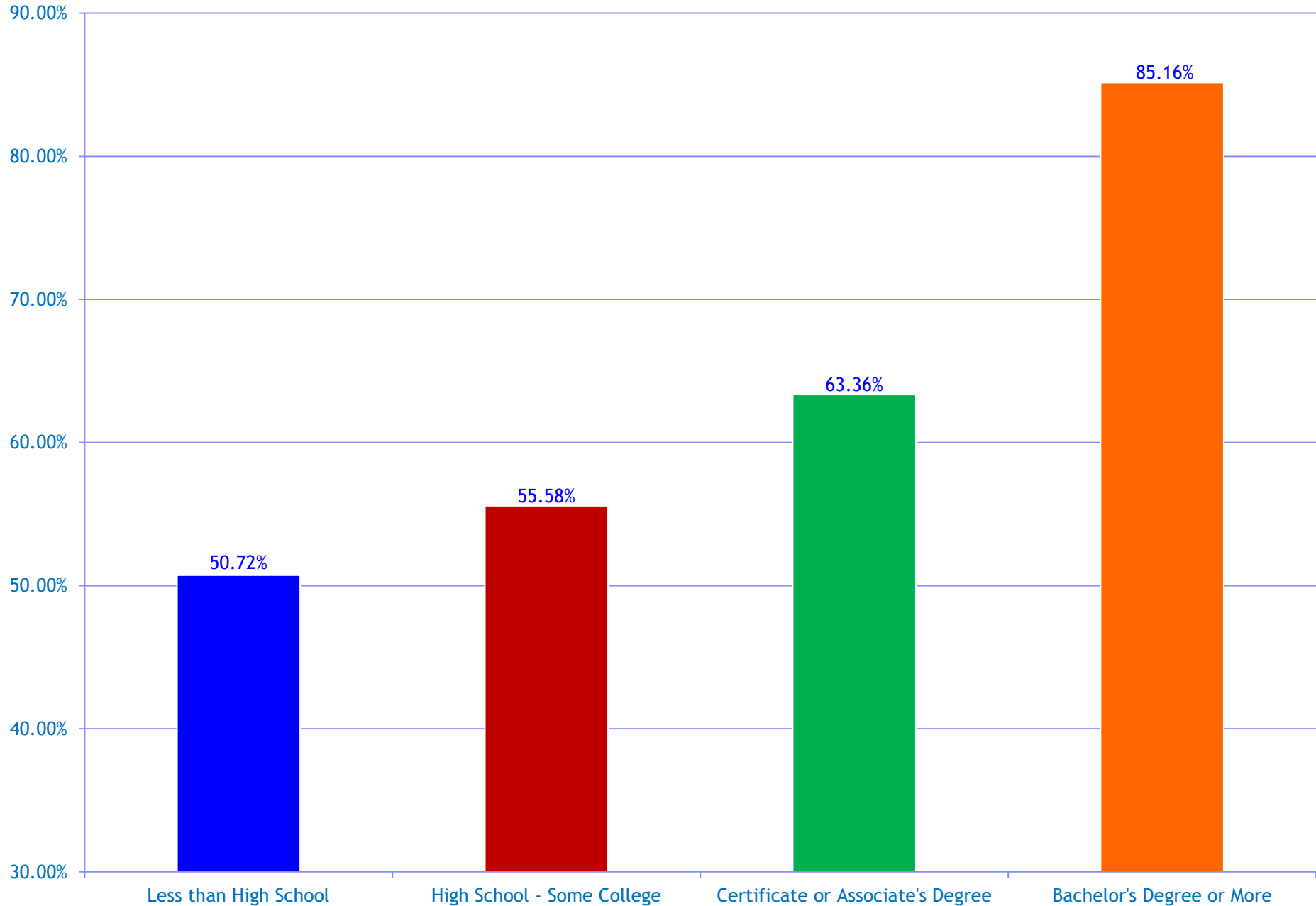
The planned level of education remains remarkably constant throughout the grades; however, this slide masks significant differences in the planned level of education for various subgroups.



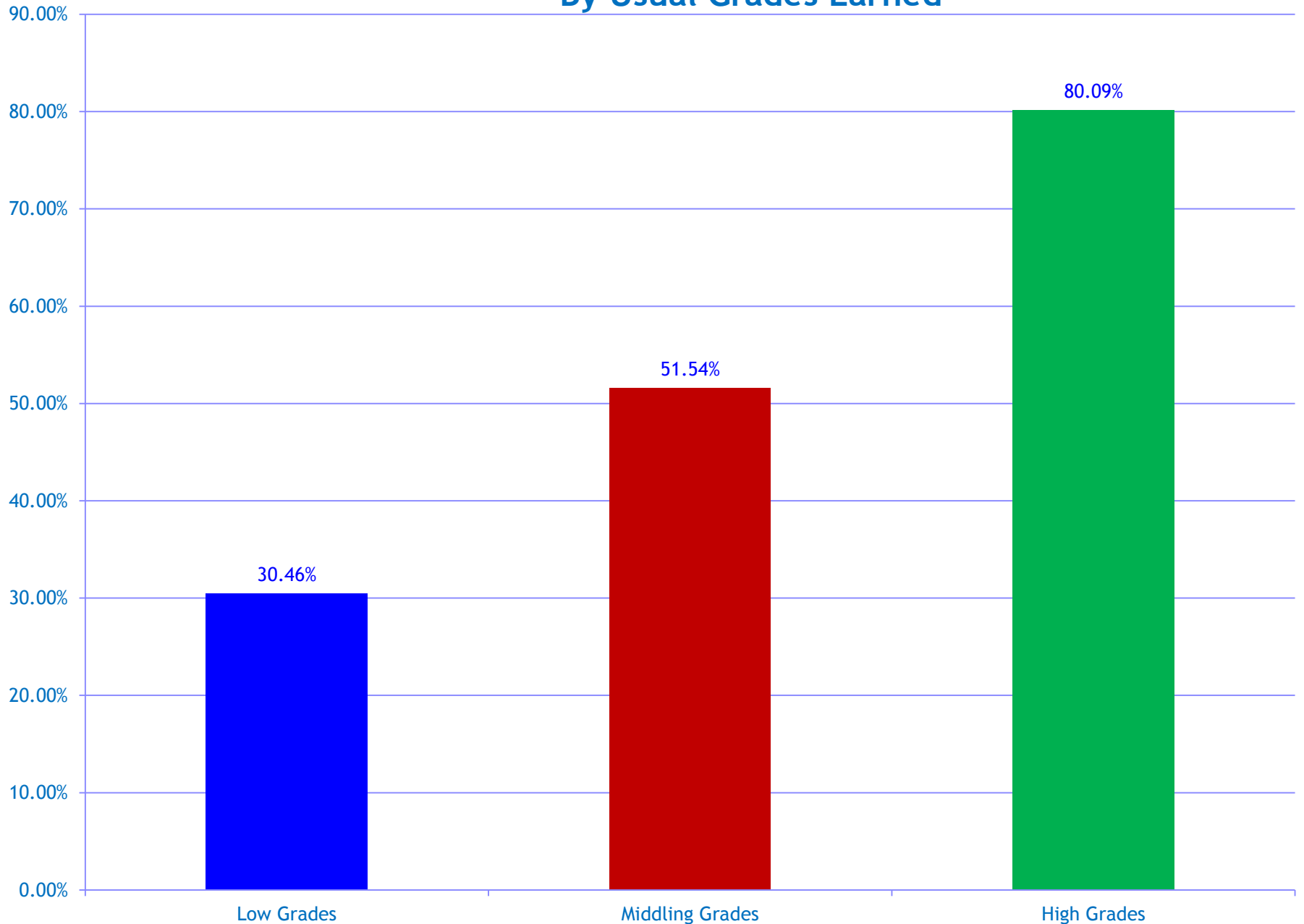
Bachelor's Degree or Higher Intention Grades 9 and 12 Males and Females



Planned Level of Education: Bachelor's Degree or Higher by Household Education

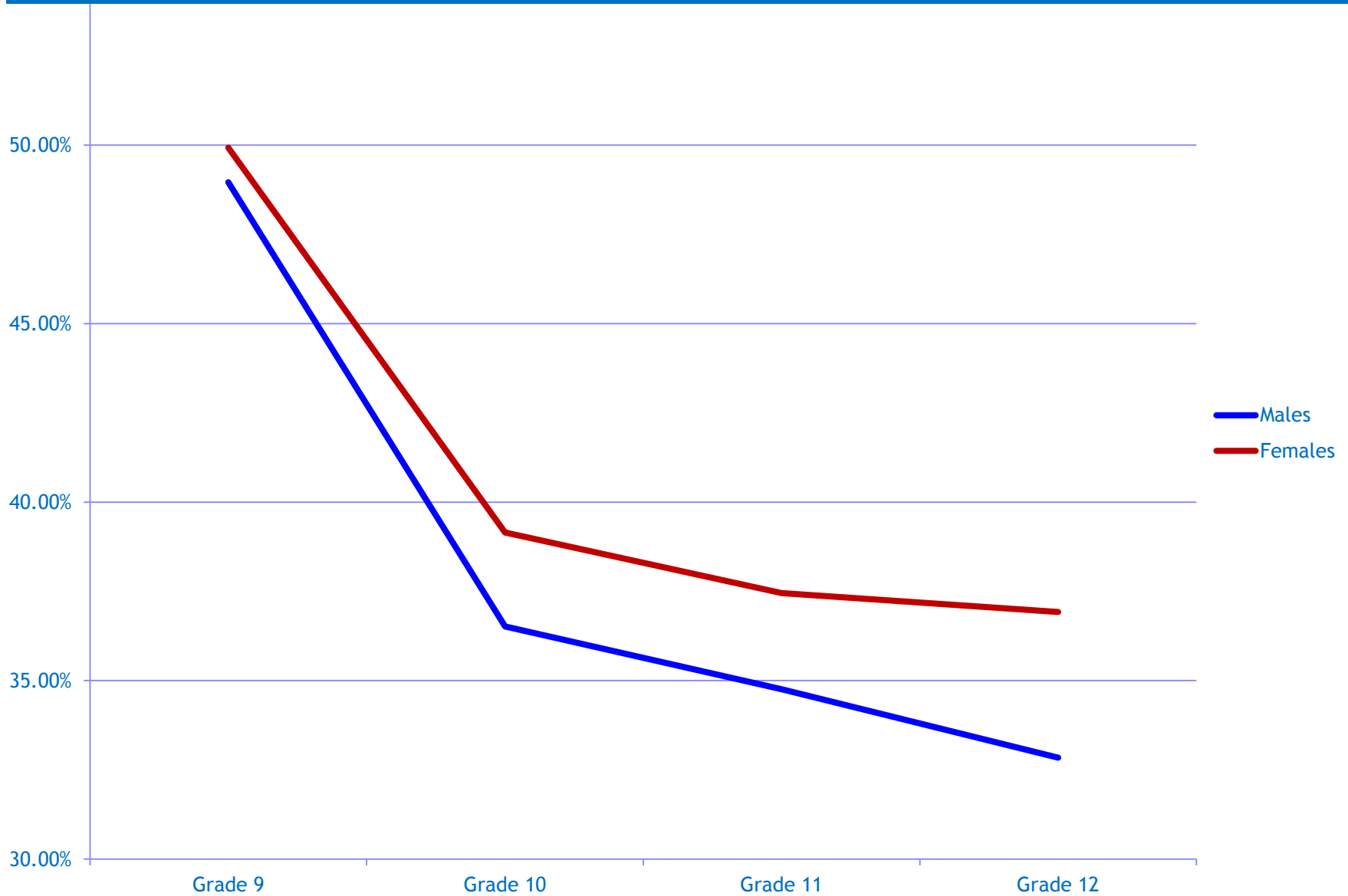


Planned Level of Education: Bachelor's Degree or Higher By Usual Grades Earned



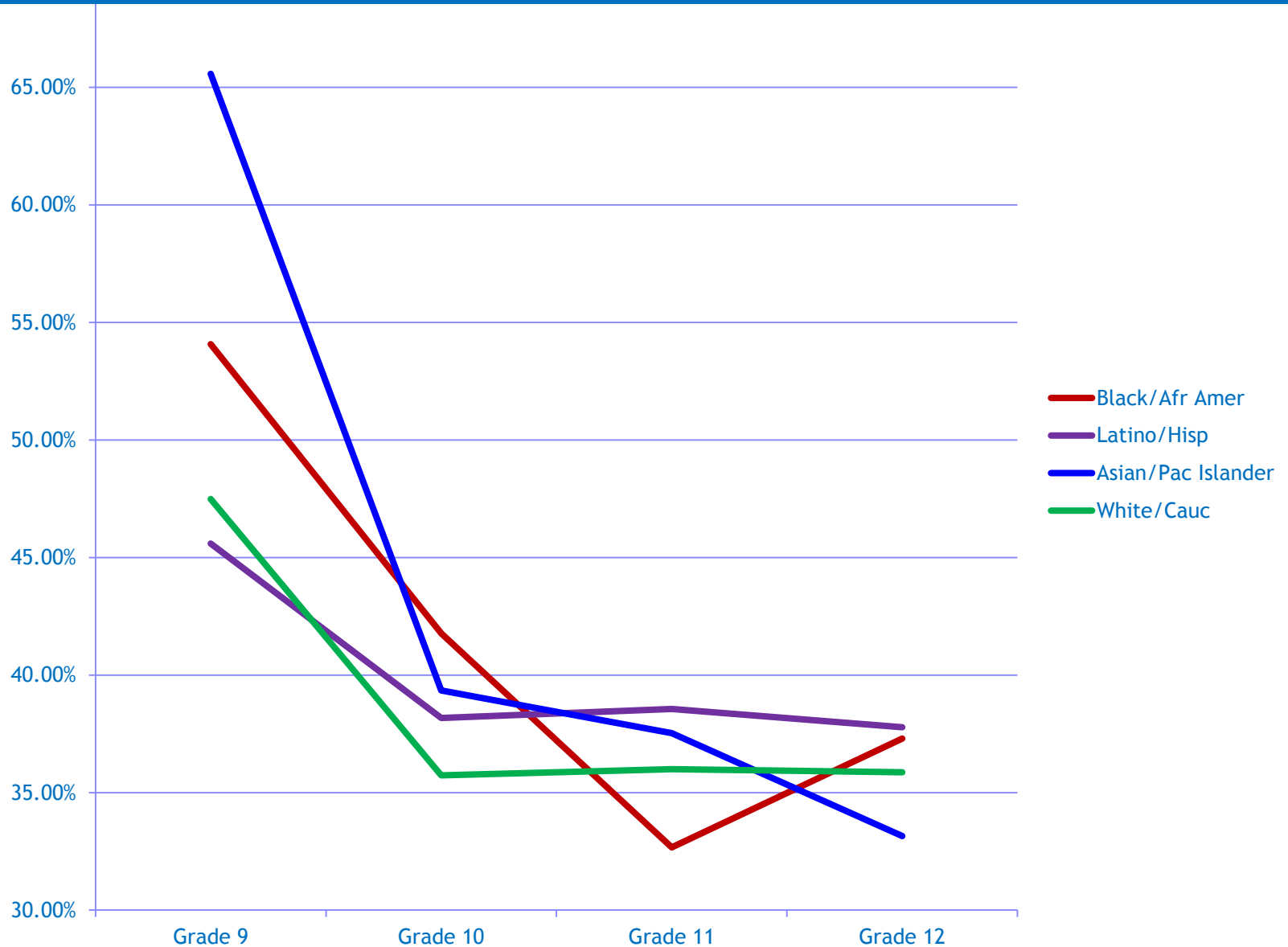
School is Providing 'a Lot' of Preparation for the Future Males and Females

Females tend to find more value in their schooling than their male counterparts, but what does it mean when nearly two-thirds of high school seniors do not perceive school to be providing significant preparation for their future?



School Is Providing 'a Lot' of Preparation for the Future Grades 9-12 by Race-Ethnicity

In ninth grade, there is a divergence of perception about school providing 'a lot' of preparation for the future. By twelfth grade, there is considerable agreement that it is not.



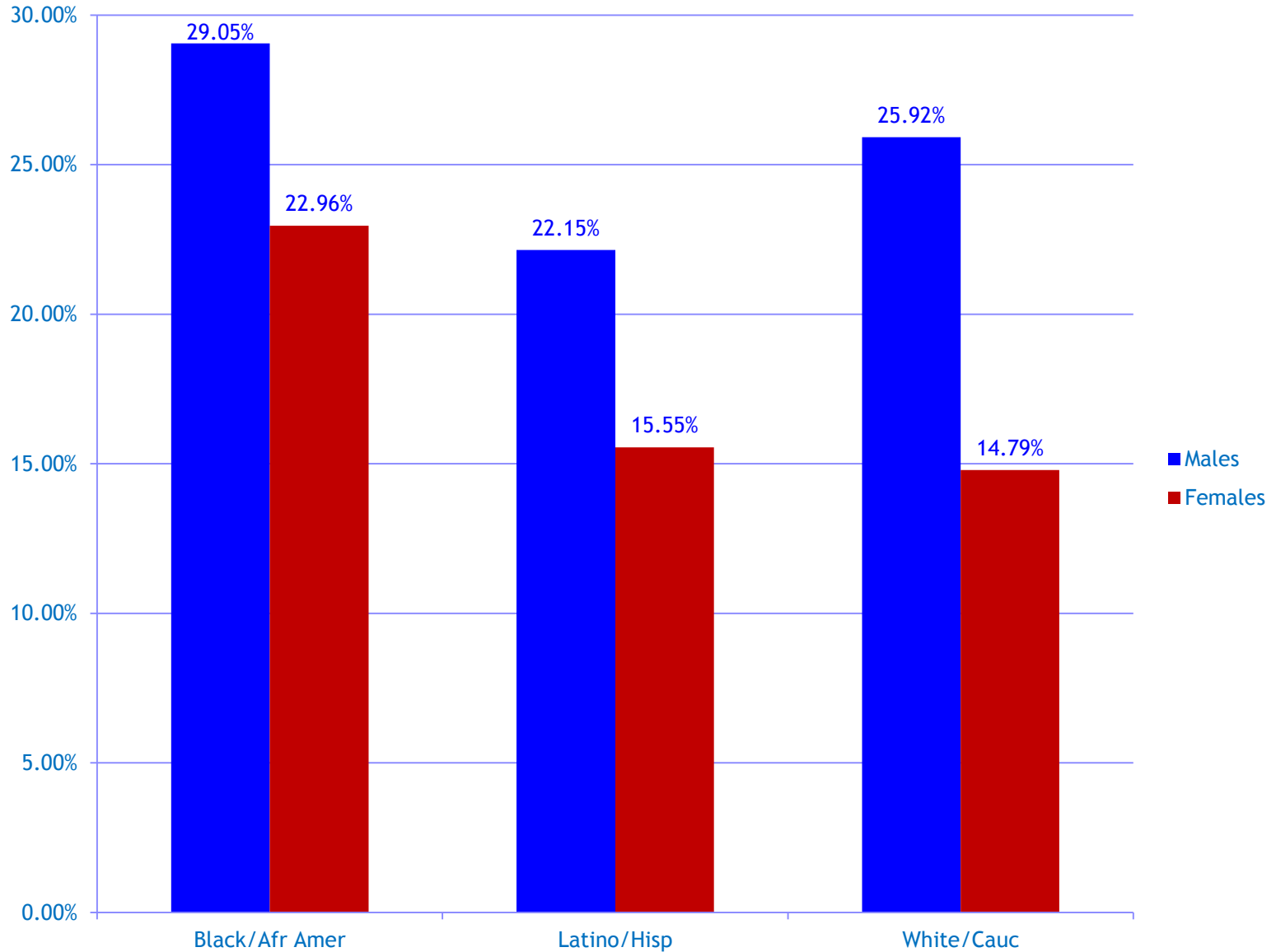
Suspension and Expulsion

A single instance of student suspension in ninth grade...

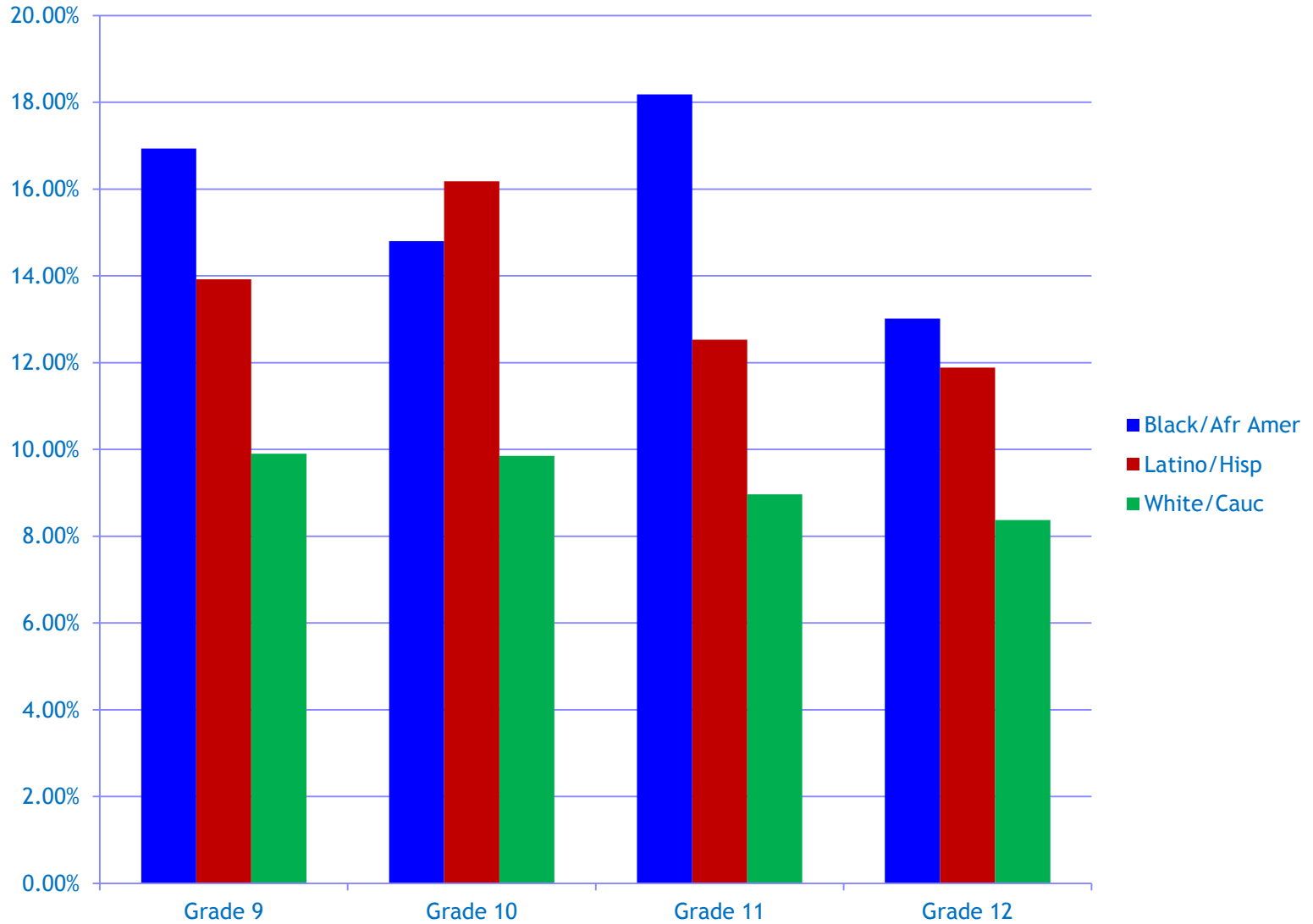
...Doubles that student's probability of dropping out of school.

Opportunities Suspended: The Disparate Impact of Disciplinary Exclusion from School. Losen, D.J. & Gillespie, J. UCLA Civil Rights Project, 2012.

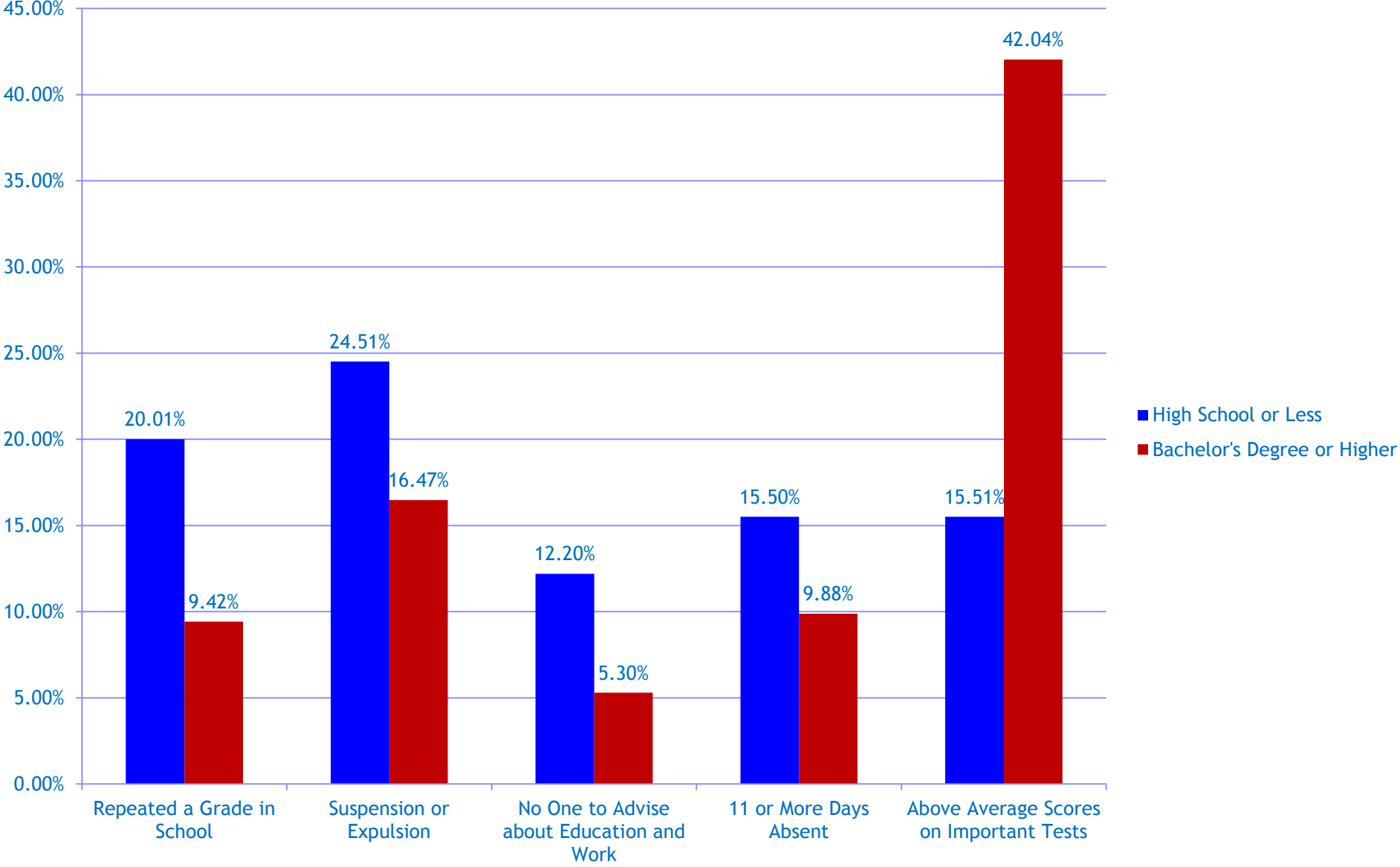
Suspensions and Expulsions Males and Females All Grades 9-12



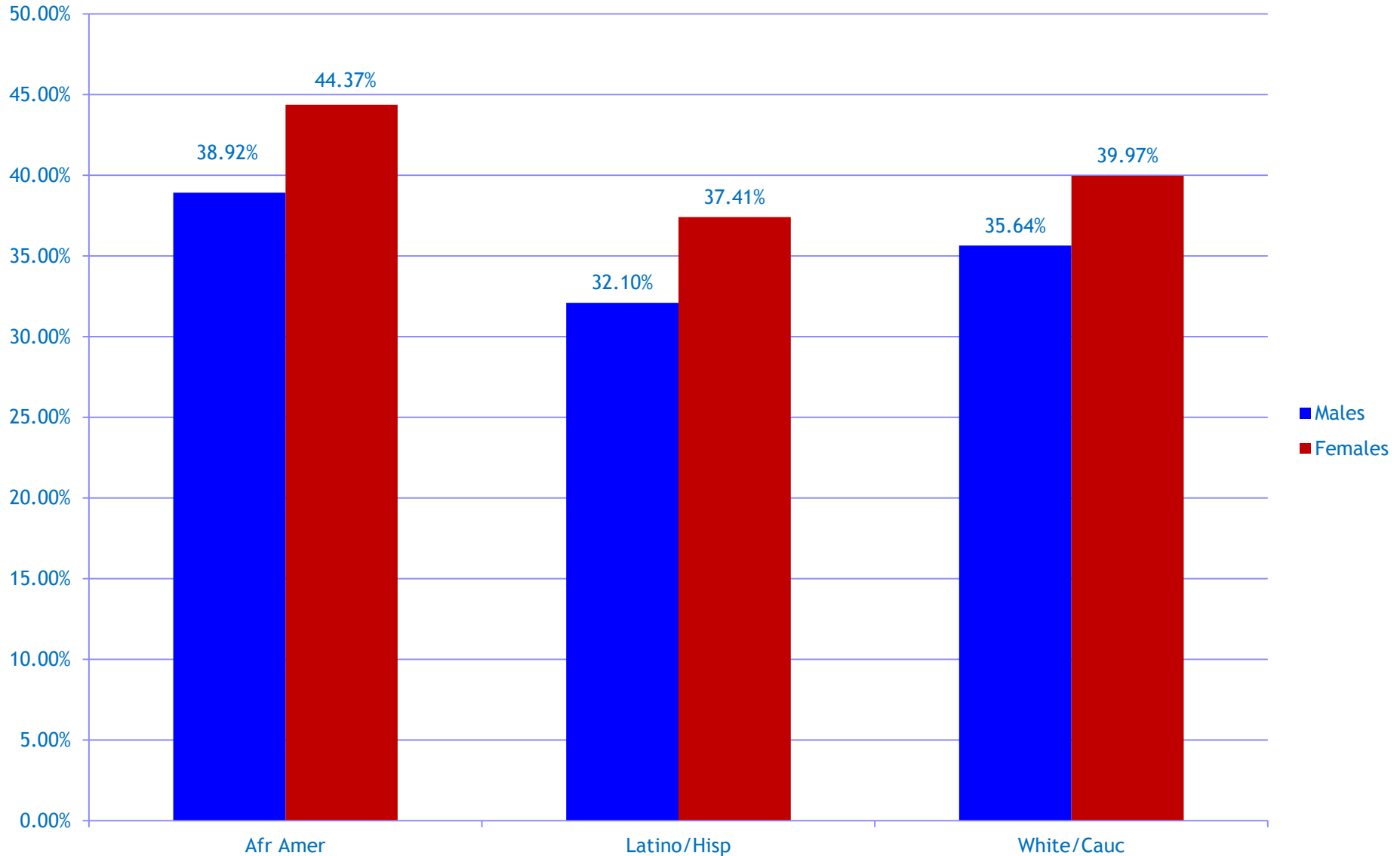
Suspensions and Expulsions by Grade and Race-Ethnicity



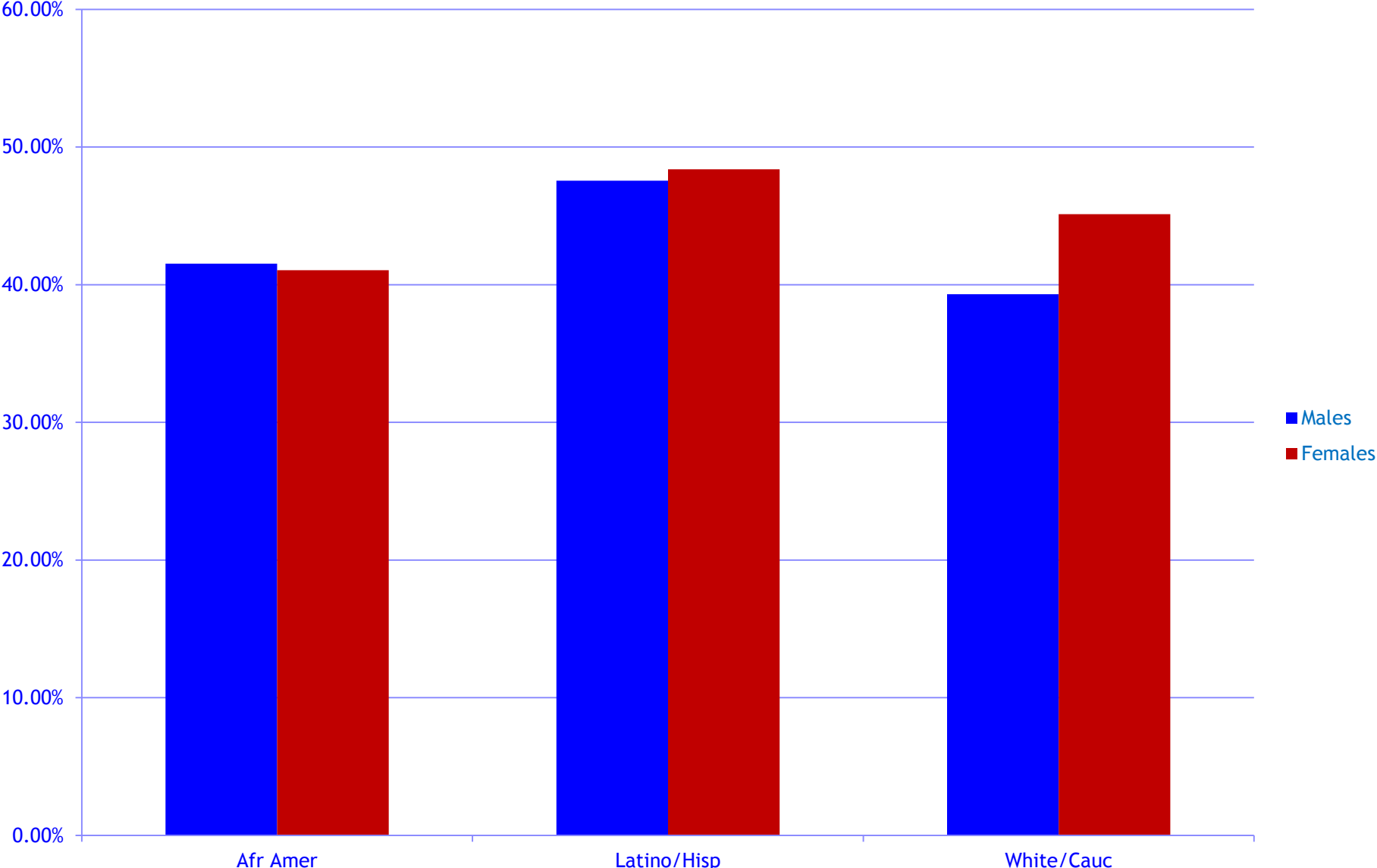
Various Factors: Low Household Education and High Household Education



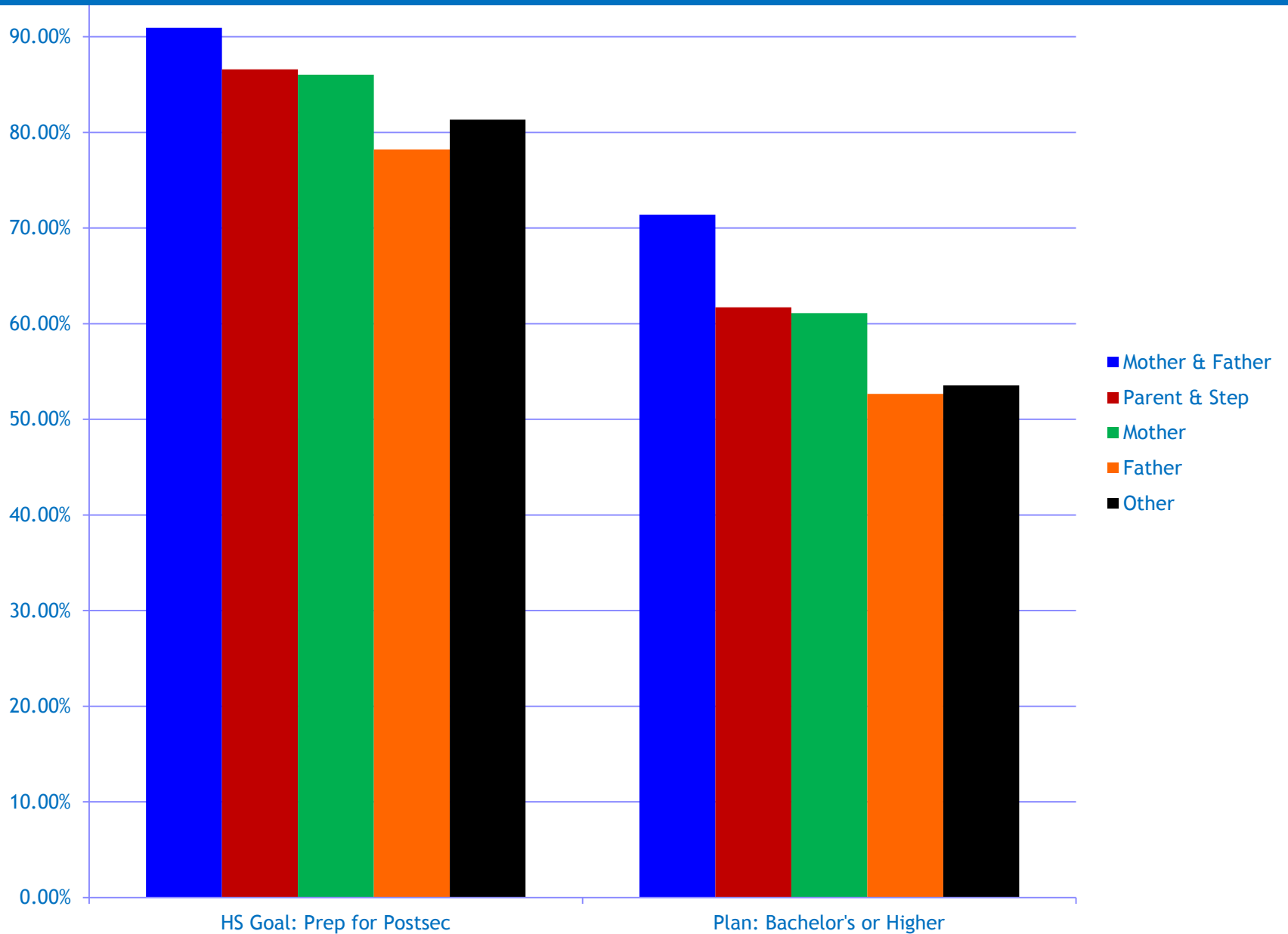
Talked with Counselor about Plans and Hopes for the Future Males and Females Grades 9-12 and Race-Ethnicity



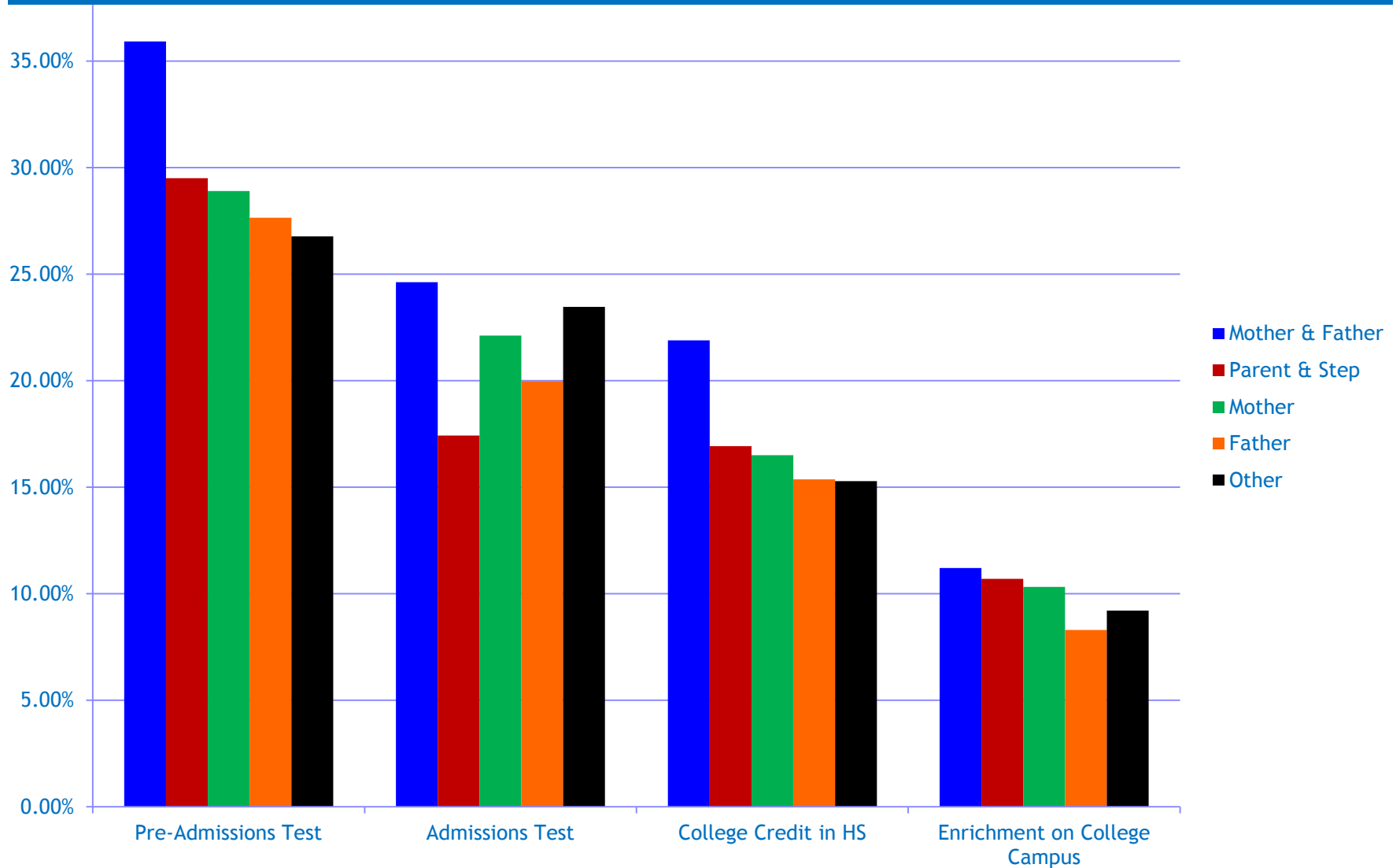
Would Like to Talk with Counselor about Plans and Hopes for the Future Males and Females by Grade and Race-Ethnicity



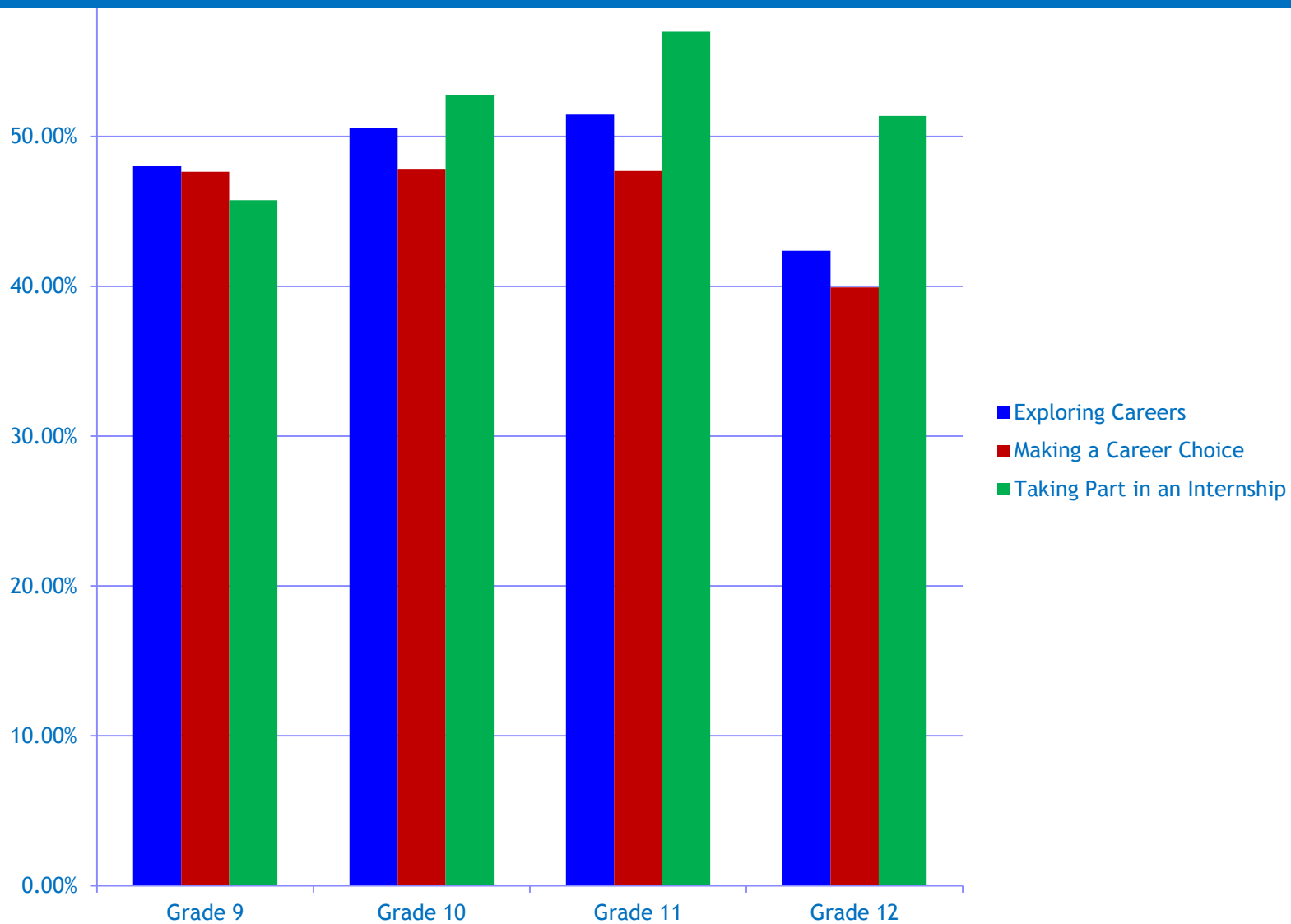
Student household living arrangements affect goals, plans, and the steps students take to pursue postsecondary education.



Student household living arrangements affect goals, plans, and the steps students take to pursue postsecondary education. The chart indicates steps taken by students, as reported in Sherlock.

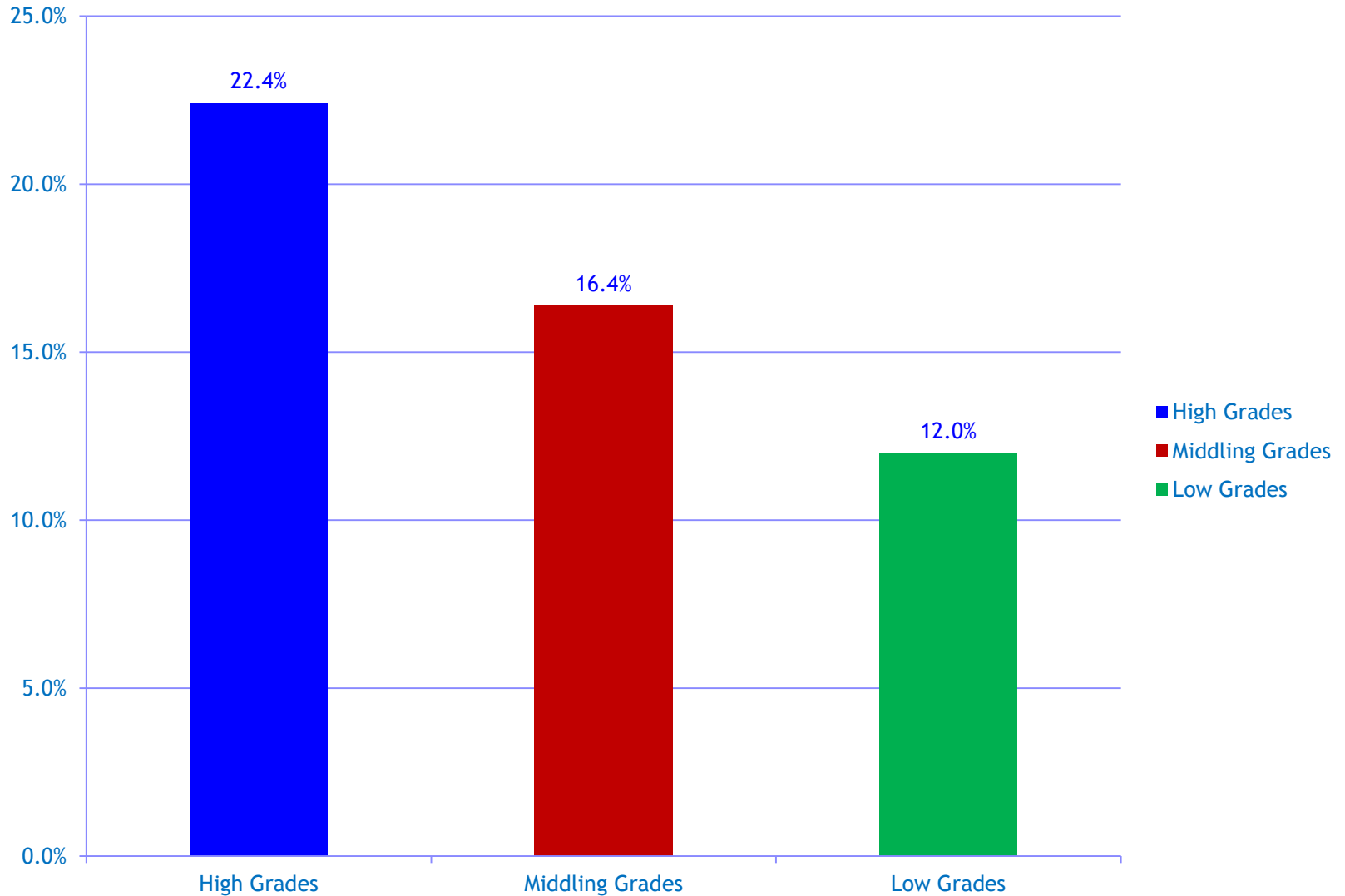


Student interest in career development services is fairly high throughout the grades. These kinds of services are in short supply in many schools.

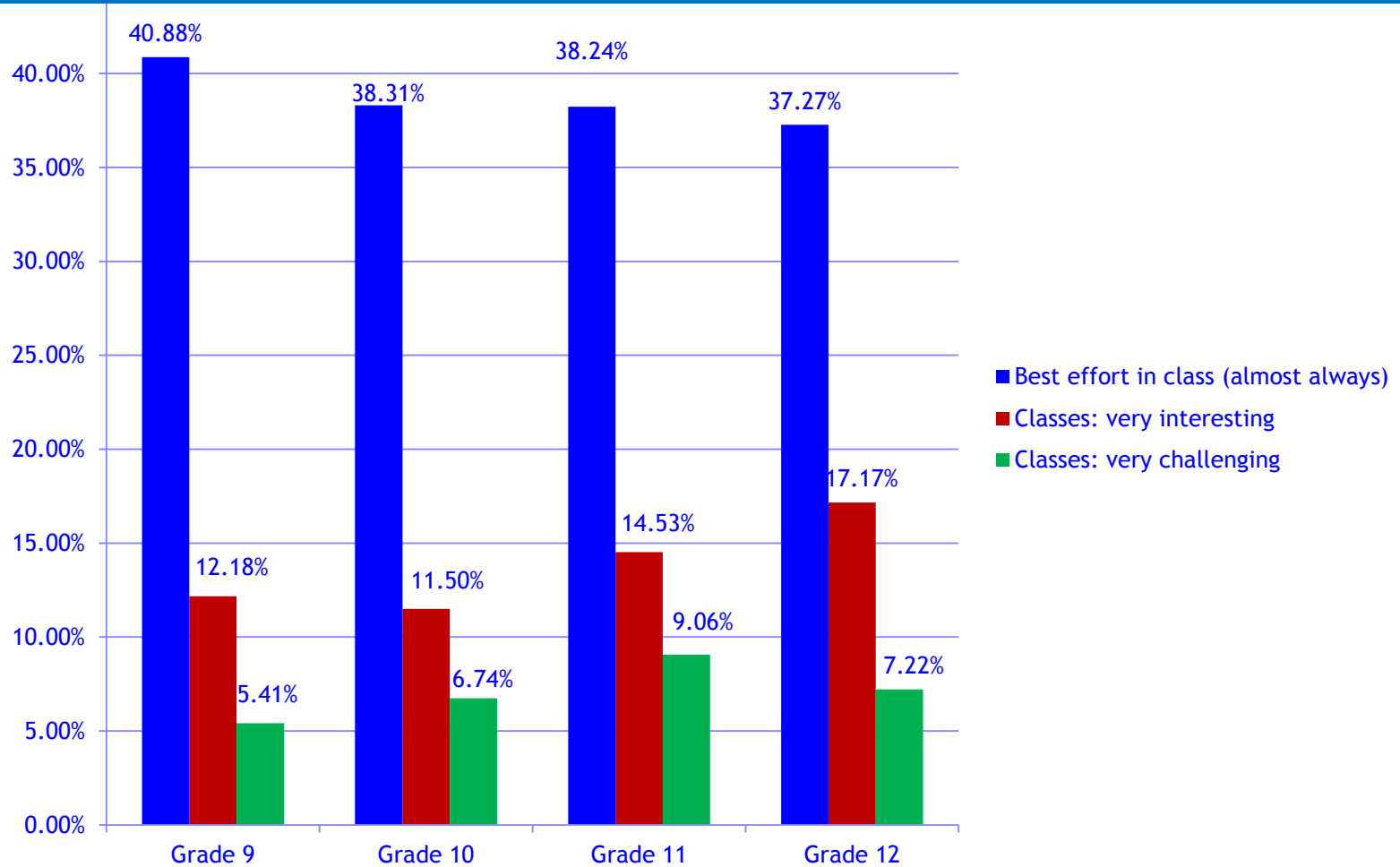


High School Students Working 15 or More Hours per Week

Students with good grades are more likely to work while in high school than their peers with lower grades.



Effort declines moderately over four years of high school. Students overwhelmingly perceive their classes to be uninteresting and unchallenging.



Questions or more information

[Information brief about the Sherlock state \(group\) guidance data system](#)

[One-page description of the Sherlock for schools and programs](#)

[Sample reports, assessment previews, and more](#)

[Join our online guidance assessment community](#)

Contact:

intoCareers, University of Oregon



Sherlock 2013 National Data Report

For Questions

email: inquiries@intoCareers.org

1-800-553-2252